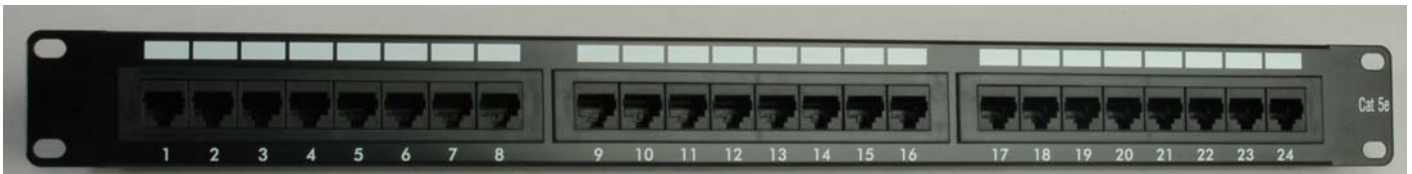


Cat 5e - Patch Panels



Category 5e Patch Panels



Description

ACTON's Category 5e unscreened patch panels provide high quality and performance standard at an economical price.

The IDC connectors are colour coded for use in either T568A or T568B wiring configurations. A Krone tool or 110 style impact tool can be used for termination.

The Category 5e patch panels have been designed for high-speed voice & data applications and exceeds all ANSI/TIA/EIA 568B, ISO/IEC 11801 and AS/NZS 3080 Standards requirements.

The patch panel can be used together with Category 5e cable and accessories to construct a link or channel with Category 5e / Class D performance.

Product and system performance is guaranteed for 15 years through the Acton warranty program (visit www.actonsystems.com for details).

Key Features

- High quality at an economical price
- Standard 19" mounting
- Cage nuts included
- Gloss black metal finish
- Available in 16, 24 & 32 port unscreened configurations
- Writing area for port identification
- Colour coded for T568A/B termination
- Suitable for Category 5e / Class D links and channels
- Fully Standards and ACA compliant
- UL certified Cat 5e performance
- 15 year warranty available

Ordering Information:

C5PP16E - 16 port patch panel, 1RU
C5PP32E - 32 port patch panel, 2RU

C5PP24E - 24 port patch panel, 1RU

Available From

Technical Information

PERFORMANCE SPECIFICATIONS

AS/NZS 3080:2003
AS/ACIF S008: 2001
ISO/IEC11801: 2002
ANSI/TIA/EIA-568-B.2

APPROVALS:

UL Certified Category 5e
ACA Compliant (N13181)



MECHANICAL SPECIFICATIONS

Jack insertion durability: ≥ 750 mating cycles
IDC block durability: ≥ 200 termination cycles

ELECTRICAL SPECIFICATIONS

Voltage rating: ≥ 150 VAC
Current rating: ≥ 1.5 A
Dielectric withstanding voltage: ≥ 1 KV

PHYSICAL SPECIFICATIONS

Jack housing and IDC block: Polyphenylene oxide, UL94V-O
RJ45, 8-position connector: Meets FCC part 68 and IEC 603-7
Connector wiring: Plating 50μ inches gold over nickel
IDC wire range: Solid or stranded, 22-26 AWG, $0.64\text{mm}^2 - 0.4\text{mm}^2$
Operating temperature range: -10°C to 60°C

SUPPORTED APPLICATIONS

Voice
ISDN: Basic & Primary Access
Token Ring: 4/16/100 Mbps
ATM: 25/52/155 Mbps
Ethernet: 10BASE-T; Fast Ethernet: 100BASE-TX/T2/T4; Gigabit Ethernet: 1000BASE-T
Broadband video

Acton International Ltd. USA

1022 Lawson Street
City of Industry, California 91748 USA
Tel: 626-913-5888 Fax: 626-913-6088
Email: sales@actonsystems.com
Web: www.actonsystems.com