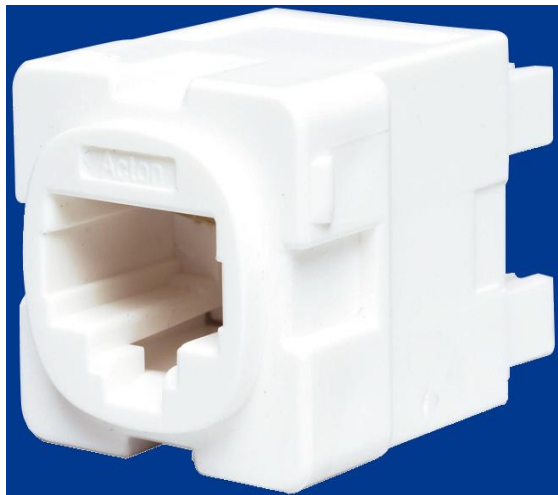


# CAT 6 - 8P8C Jack



## CAT 6 - 8P8C Australian Jack Fits Clipsal / HPM Wall Plates

### Description

ACTON's Category 6 Australian unscreened jack fits directly into either Clipsal or HPM style wall plates without the need for an adapter. The jack can be terminated using either a Krone or 110 style impact tool and can be configured to suit T568A or T568B wiring. This high quality jack is available in a range of colours, white, blue, yellow, green, red and black.

The Category 6 jack has been designed for high-speed voice & data applications and can be used together with Category 6 cable and accessories to construct a link or channel with Category 6 / Class E performance.

UL certified Category 6 link / channel performance when used when used together with Acton Category 6 cable, patch panels and patch cords.

### Key Features

- Low profile body fits directly into Clipsal / HPM wall plates
- 8-position unscreened modular connector (RJ45) with 50 microinches of gold over nickel contacts
- Colour coded for T568A/B termination
- Available in 6 colours
- Economical 50 bucket bulk pack available (white only)
- Suitable for Category 6 / Class E links and channels
- UL certified Cat 6 link / channel performance
- Standards and ACA compliant

### Ordering Information:

**C6JWH - Cat 6 jack, white, 10 pack**  
**C6JBK - Cat 6 jack, black, 10 pack**  
**C6JBL - Cat 6 jack, blue, 10 pack**  
**C6JWH-50 - Cat 6 jack, white, 50 bucket**

**C6JGN - Cat 6 jack, green, 10 pack**  
**C6JRD - Cat 6 jack, red, 10 pack**  
**C6JYL - Cat 6 jack, yellow, 10 pack**

### Available From

# Technical Information

## PERFORMANCE SPECIFICATIONS

AS/NZS 3080:2003  
AS/ACIF S008: 2001  
ISO/IEC11801: 2002  
ANSI/TIA/EIA-568-B.2

## APPROVALS:

UL Certified Category 6 link / channel performance when used together with Acton Category 6 cable, patch panel and patch cords  
ACA Compliant (N13181)

## MECHANICAL SPECIFICATIONS

Jack insertion durability:  $\geq 750$  mating cycles  
Plug & jack contact force:  $\geq 100g$  with FCC approved plug  
Plug retention force:  $\geq 133N$

## ELECTRICAL SPECIFICATIONS

Insulation resistance:  $\geq 500M\Omega$   
Contact resistance:  $\leq 20 m\Omega$   
DC resistance:  $\leq 0.1\Omega$   
Current rating:  $\geq 1.5 A$

## PHYSICAL SPECIFICATIONS

Housing: Flame retardant plastic, UL94V-O  
RJ45, 8-position connector: Meets FCC part 68 and IEC 603-7  
Connector wiring: Plating  $50\mu$  inches gold over nickel  
IDC wire range: Solid or stranded, 22-26 AWG,  $0.64mm^2 - 0.4mm^2$   
Operating temperature range:  $-10^{\circ}C$  to  $60^{\circ}C$

## SUPPORTED APPLICATIONS

Voice  
ISDN: Basic & Primary Access  
Token Ring: 4/16/100 Mbps  
ATM: 25/52/155 Mbps ; 1.2 Gbps  
Ethernet: 10BASE-T; Fast Ethernet: 100BASE-TX/T2/T4; Gigabit Ethernet: 1000BASE-T  
Broadband video

## Acton International Ltd. USA

1022 Lawson Street  
City of Industry, California 91748 USA  
Tel: 626-913-5888 Fax: 626-913-6088  
Email: sales@actonsystems.com  
Web: www.actonsystems.com